

LOT 1

Date Installed: 1-27-06
Installed by: Jeff McBride
Inspected by: Rex Moll

Apt. #310 Northcrest Dr.
Storm Tap

6" underdrains both side
1' L.F. beyond new curb

STA 0+29.28 BACK, 58.55' LT ((STORM))
CB RIM ELEV = 680.15
4" CPP INV ELEV = 678.95 E

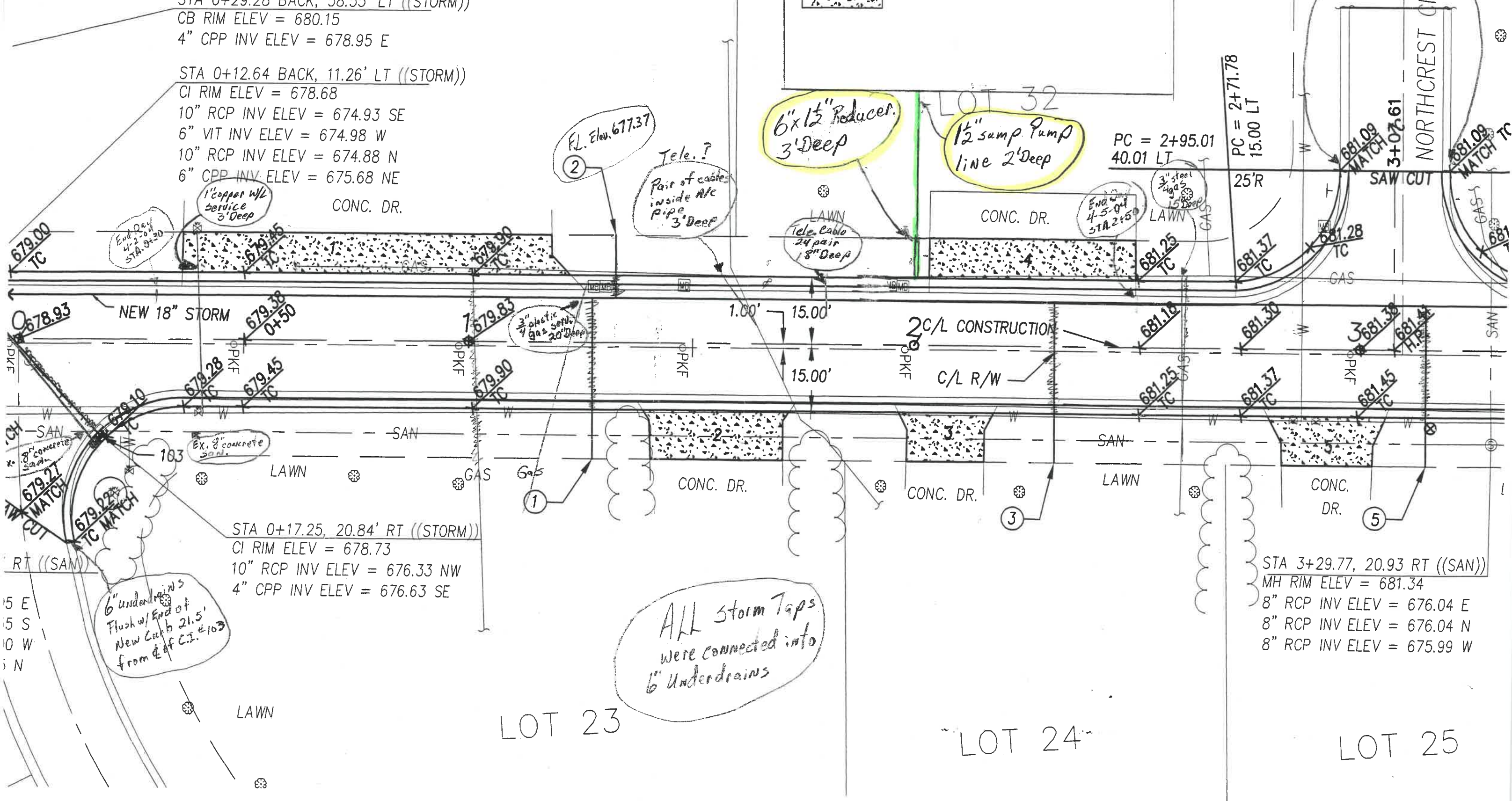
STA 0+12.64 BACK, 11.26' LT ((STORM))
CI RIM ELEV = 678.68
10" RCP INV ELEV = 674.93 SE
6" VIT INV ELEV = 674.98 W
10" RCP INV ELEV = 674.88 N
6" CPP INV ELEV = 675.68 NE

CONCRETE DRIVE REPLACEMENT

6" x 1 1/2" Reducer.
3' Deep
1/2" samp Pump
line 2' Deep

PC = 2+95.01
40.01 LT
PC = 2+71.78
15.00 LT

NORTHCREST CIR
3+07.61
SAW CUT



1" copper w/ service
3' Deep
CONC. DR.

FL. Elev. 677.37
2
Tele. ?
Pair of cables
inside A/C
Pipe
3' Deep

LAWN
Tele. cable
24 pair
8" Deep

3" steel
4 gas
15' Deep
GAS

NEW 18" STORM
0+50

2 C/L CONSTRUCTION
C/L R/W

STA 0+17.25, 20.84' RT ((STORM))
CI RIM ELEV = 678.73
10" RCP INV ELEV = 676.33 NW
4" CPP INV ELEV = 676.63 SE

STA 3+29.77, 20.93 RT ((SAN))
MH RIM ELEV = 681.34
8" RCP INV ELEV = 676.04 E
8" RCP INV ELEV = 676.04 N
8" RCP INV ELEV = 675.99 W

ALL Storm Taps
were connected into
6" Underdrains

LOT 23

LOT 24

LOT 25

6" underdrains
Flush w/ End of
New Curb 21.5'
from E of C.I. #103

15 E
15 S
10 W
5 N